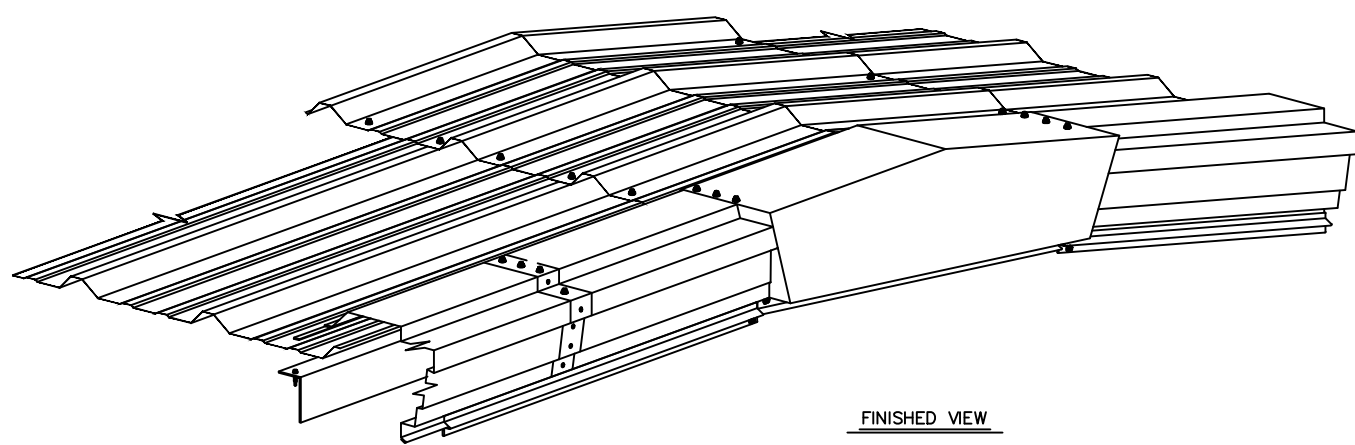
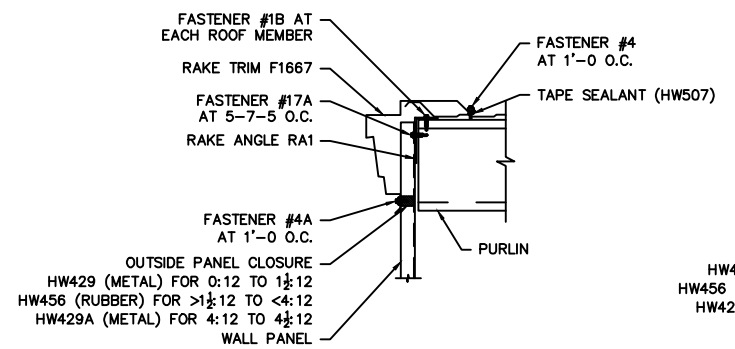


RAKE TRIM LAP

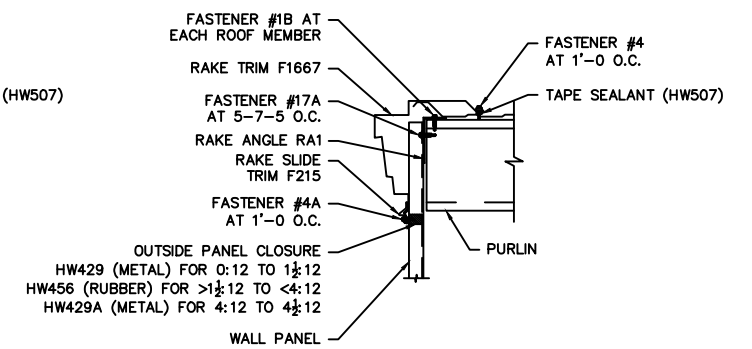
RIDGE TERMINATION



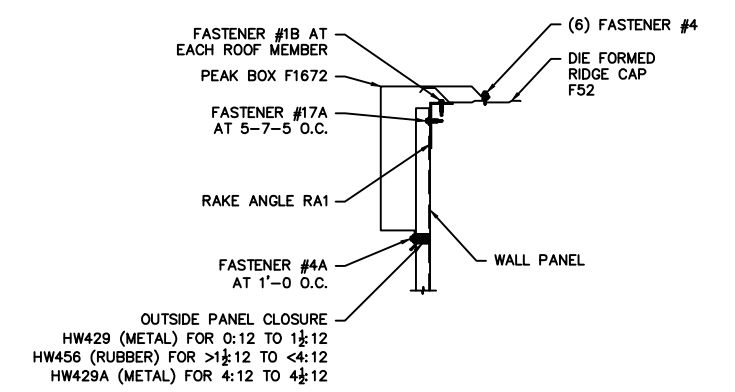
FINISHED VIEW



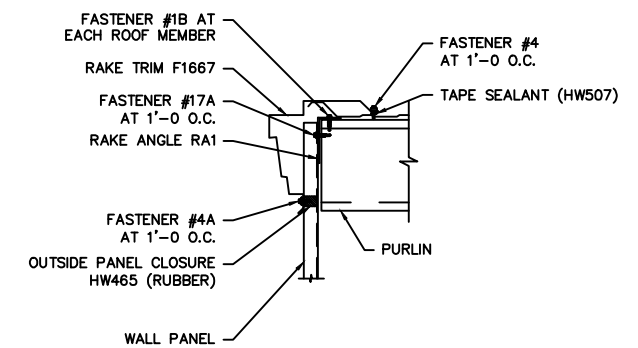
STANDARD SECTION AT PBR WALL



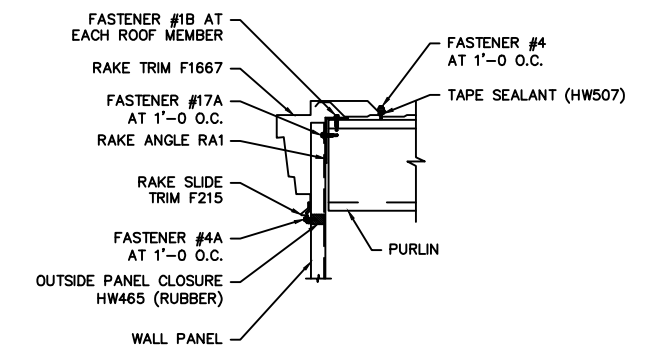
STANDARD SECTION AT PBR WALL  
GABLE RUN GREATER THAN 100'-0



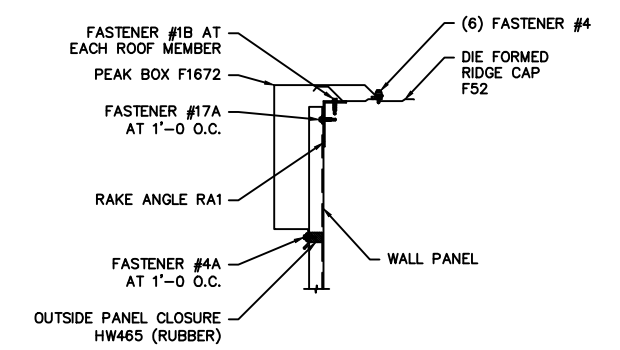
PEAK BOX SECTION AT PBR WALL



STANDARD SECTION AT AVP WALL



STANDARD SECTION AT AVP WALL  
GABLE RUN GREATER THAN 100'-0



PEAK BOX SECTION AT AVP WALL

NOTES:

- 1.) PERIMETER TRIM AND GUTTERS MAY BE COATED WITH A REMOVABLE PROTECTIVE FILM. AFTER PROLONGED PERIODS OF EXPOSURE TO DIRECT SUNLIGHT THE FILM MAY BECOME BRITTLE AND DIFFICULT TO REMOVE.
- 2.) TO AVOID SUCH DIFFICULTIES, COVER THESE PARTS FROM DIRECT SUNLIGHT AT THE STORAGE SITE AND JOBSITE. REMOVE THE PROTECTIVE FILM DURING ERECTION OR IMMEDIATELY AFTER.
- 3.) TRIM PARTS ARE PROVIDED IN STANDARD LENGTHS AND MAY REQUIRE FIELD CUTTING TO LENGTH. (NOTE, THE REMAINDER MAY BE REQUIRED AT DIFFERENT LOCATION.)
- 4.) ROOF AND WALL PANELS SHOULD BE CLEANED OF ANY DRILL SHAVINGS OR FIELD CUTTING FILINGS AT THE END OF EACH DAY TO PREVENT RUSTING OF THESE PARTICLES.

CASCADING NORTHERN RAKE DETAILS PBR ROOF AT STEEL LINE	5/6/14
---	--------