

Girt Tie-In - End Frame - Common Wall Open

Bypass Column - Endwall Girt Does Not Bypass Column Flange

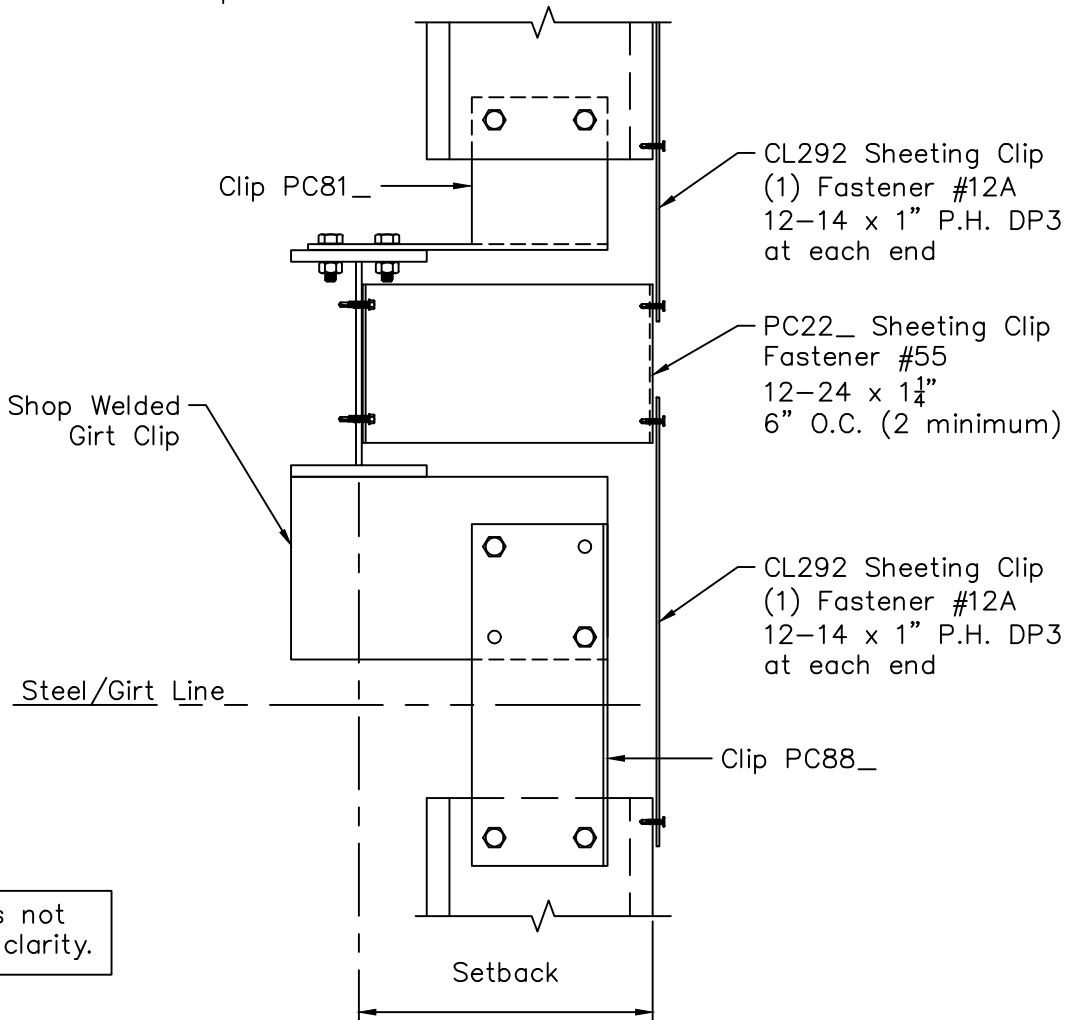
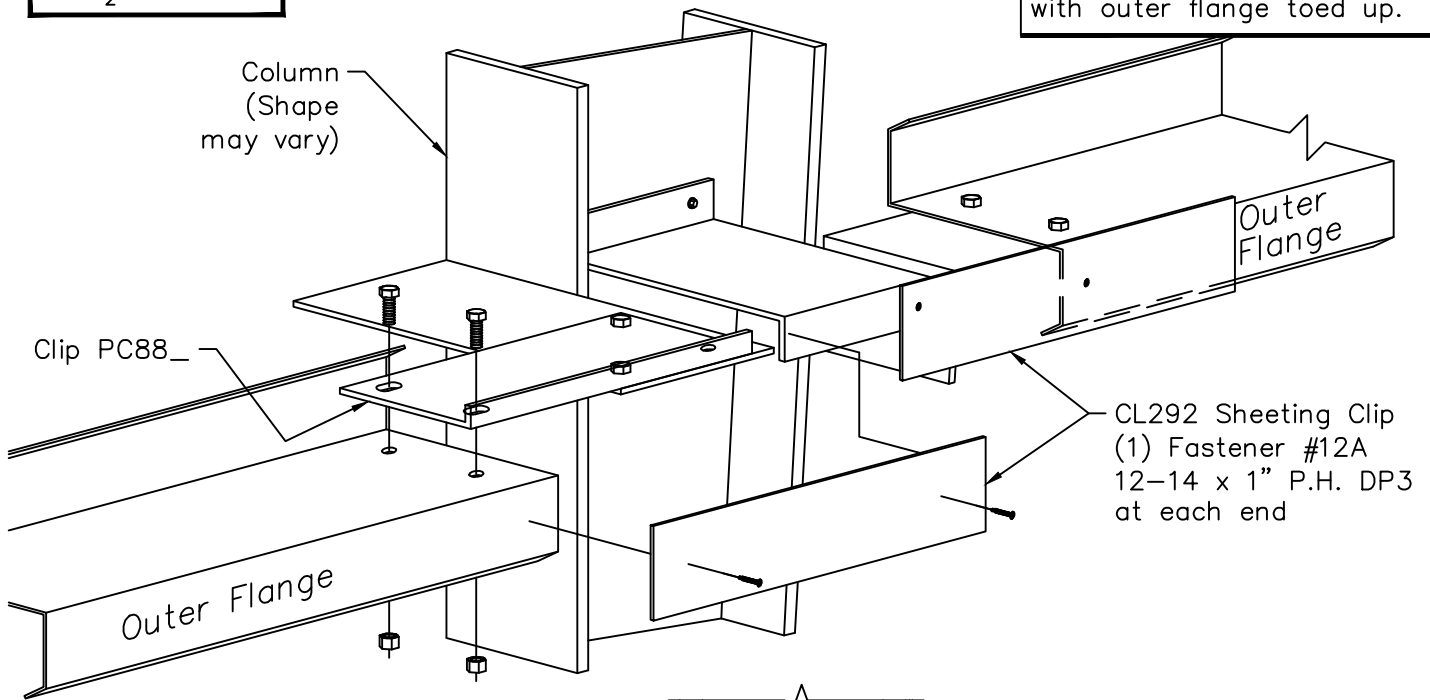
Page
EF04051

Date
Jul '11

Rev.
00

Note: All Bolts are $\frac{1}{2}$ " Diameter

Zee Girt shown, Tie-in Detail similar for Cee or Zee Girt with outer flange toed up.



Wall Panels not shown for clarity.