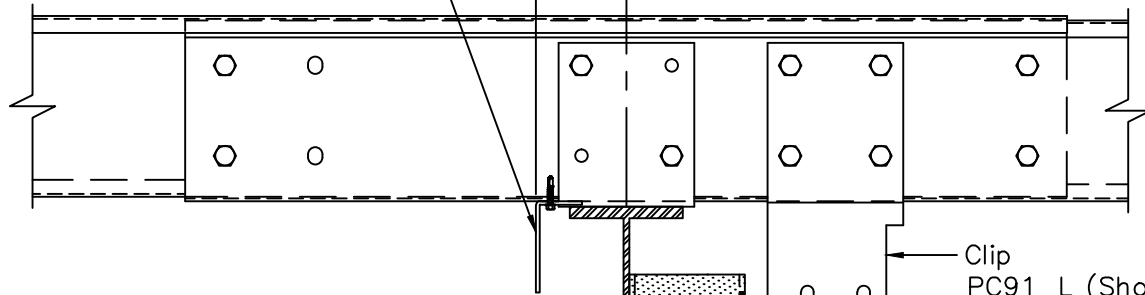


# Flush Transverse Partition - Flush Column at Slope Type 4 Connection with Column Extension to Purlin

Sheeting Angle RA1  
Attach to each Purlin with  
(1) Fastener #1B  
 $\frac{1}{4}$ "-14 x  $1\frac{1}{4}$ " DP3  
(Field Notch at Shop Welded  
Purlin Clips when Offset is 4")

Girt and Rafter  
Offset 4" (w/8" Girts)  
5" (w/10" Girts)  
6" (w/12" Girts)



(4)  $\frac{1}{2}$ "  $\phi$  Bolts

Clip  
PC91\_L (Shown)  
PC91\_R (Opposite)  
attach to Purlin web  
w/(4)  $\frac{1}{2}$ "  $\phi$  Bolts

(2)  $\frac{1}{2}$ "  $\phi$  Bolts with  
 $\frac{1}{2}$ " Washers WFH500  
Slot side

Clip PC90\_  
or  
Bracket BB\_\_\_\_\_

Typical Flush Girt attachment, attach  
with (2)  $\frac{1}{2}$ "  $\phi$  Bolts to Shop Welded  
Clip (See "Transverse Partition  
Framing Elevation" for locations)

Flush Partition Column  
(See "Transverse Partition  
Framing Elevation" for locations and Flange  
Brace requirements, if required)

Sheeting Clip  
CL292 or PC30\_  
(1) Fastener #12A  
12-14 x 1" DP3  
at each end

Partition Base Framing  
Standard Base Angle RA1 shown,  
may vary. (See "Transverse Partition  
Framing Elevation" for requirement.)

Field Cut Partition  
Base Framing at  
Column

$\frac{1}{4}$ "  $\phi$  Anchor (Min.)  
60" o.c. (Max.)  
Not by Bldg. Mfr.

Zee Girts shown, attachment  
similar for Cee or Zee Girt  
with outer flange toed up.

