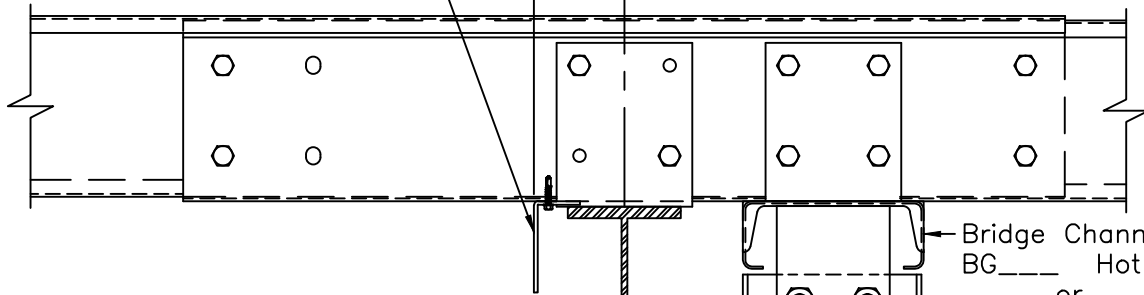


Flush Transverse Partition - Flush Load Bearing Column at Slope or Peak Type 3 Conn. with Column Extension to Bridge Channel

Sheeting Angle RA1
 Attach to each Purlin with
 (1) Fastener #1B
 $\frac{1}{4}$ "-14 x $1\frac{1}{4}$ " DP3
 (Field Notch at Shop Welded
 Purlin Clips when Offset is 4")

Girt and Rafter
 Offset 4" (w/8" Girts)
 5" (w/10" Girts)
 6" (w/12" Girts)



Rafter/Column shape
 and connection will
 vary, see "Frame
 Cross Section" for
 requirements.

Bridge Channel
 BG____ Hot Rolled
 or
 BGC____ Cold Form
 attach to Purlins
 with (4) $\frac{1}{2}$ " ϕ Bolts
 (4) $\frac{3}{4}$ " ϕ A325 Bolts

Typical Flush Girt attachment, attach
 with (2) $\frac{1}{2}$ " ϕ Bolts to Shop Welded
 Clip (See "Transverse Partition
 Framing Elevation" for locations)

Multi-Span Frame Column
 acting as Flush Partition Column
 (See "Frame Cross Section" for
 locations and Part Marks)

Sheeting Clip
 CL292 or PC30_
 (1) Fastener #12A
 12-14 x 1" DP3
 at each end

Partition Base Framing
 Standard Base Angle RA1 shown,
 may vary. (See "Transverse Partition
 Framing Elevation" for requirement.)

Field Cut Partition
 Base Framing at
 Column

$\frac{1}{4}$ " ϕ Anchor (Min.)
 60" o.c. (Max.)
 Not by Bldg. Mfr.

Zee Girts shown, attachment
 similar for Cee or Zee Girt
 with outer flange toed up.

