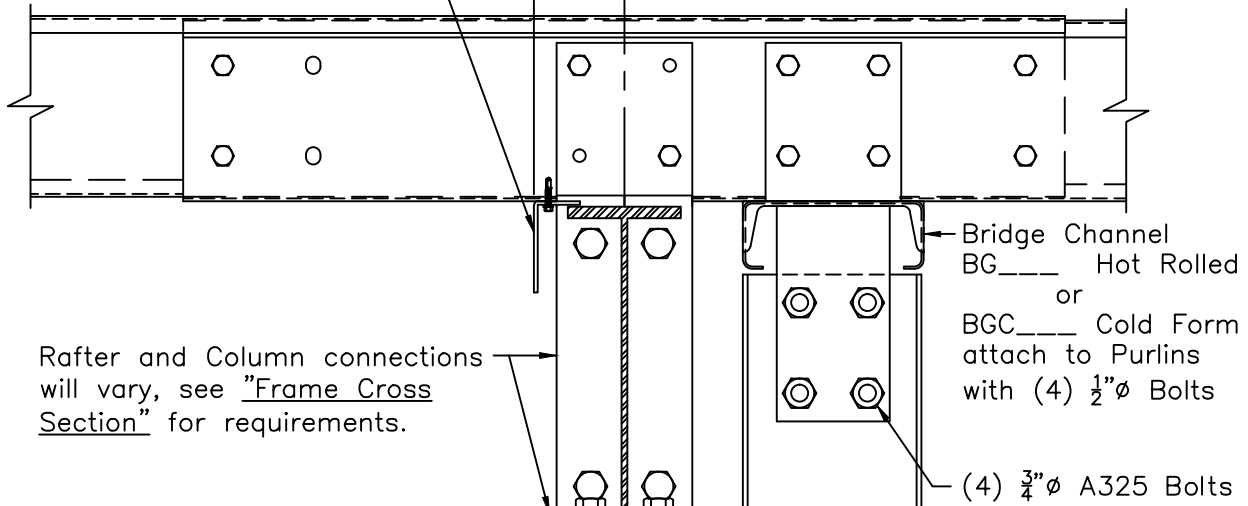


Flush Transverse Partition - Flush Load Bearing Col at Peak (Rafter Spliced) Type 3 Conn. with Column Ext. to Bridge Channel

Sheeting Angle RA1
Attach to each Purlin with
(1) Fastener #1B
 $\frac{1}{4}$ "-14 x $1\frac{1}{4}$ " DP3
(Field Notch at Shop Welded
Purlin Clips when Offset is 4")

Girt and Rafter
Offset 4" (w/8" Girts)
5" (w/10" Girts)
6" (w/12" Girts)



Rafter and Column connections will vary, see "Frame Cross Section" for requirements.

Bridge Channel
BG____ Hot Rolled
or
BGC____ Cold Form
attach to Purlins
with (4) $\frac{1}{2}$ " ϕ Bolts

(4) $\frac{3}{4}$ " ϕ A325 Bolts

Typical Flush Girt attachment, attach with (2) $\frac{1}{2}$ " ϕ Bolts to Shop Welded Clip (See "Transverse Partition Framing Elevation" for locations)

Flush Partition Column (See "Transverse Partition Framing Elevation" for locations and Flange Brace requirements, if required)

Sheeting Clip
CL292 or PC30_
(1) Fastener #12A
12-14 x 1" DP3
at each end

Partition Base Framing
Standard Base Angle RA1 shown, may vary. (See "Transverse Partition Framing Elevation" for requirement.)

Field Cut Partition Base Framing at Column

$\frac{1}{4}$ " ϕ Anchor (Min.)
60" o.c. (Max.)
Not by Bldg. Mfr.

Zee Girts shown, attachment similar for Cee or Zee Girt with outer flange toed up.