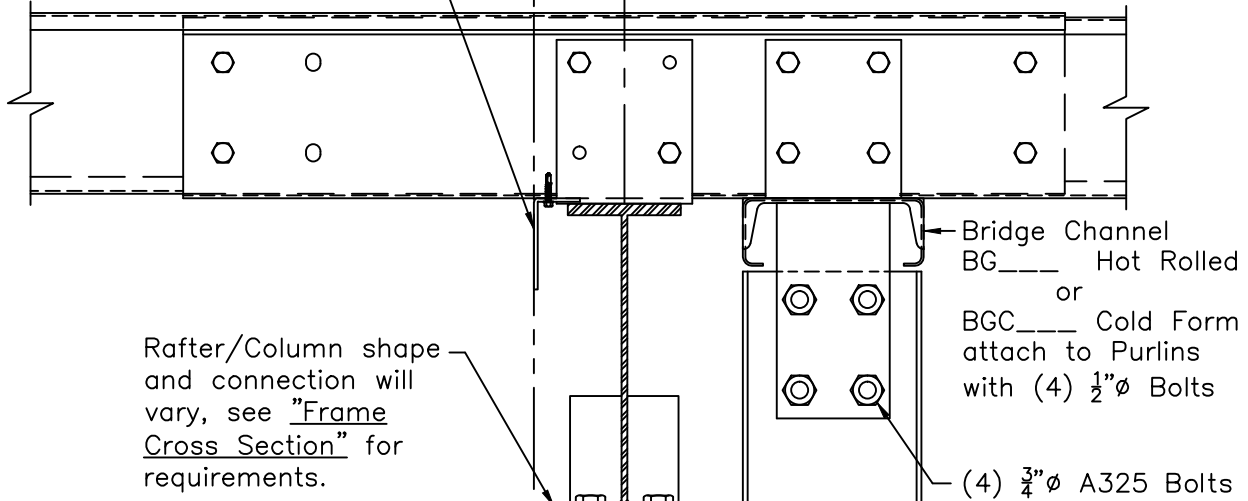


# Flush Transverse Partition - 1" Inset Load Bearing Column at Slope or Peak Type 3 Conn. with Column Ext. to Bridge Channel

Sheeting Angle RA1  
 Attach to each Purlin with  
 (1) Fastener #1B  
 $\frac{1}{4}$ "-14 x  $1\frac{1}{4}$ " DP3  
 (Field Notch at Shop Welded  
 Purlin Clips when Offset is 4")

Girt and Rafter  
 Offset 4" (w/8" Girts)  
 5" (w/10" Girts)  
 6" (w/12" Girts)



Rafter/Column shape and connection will vary, see "Frame Cross Section" for requirements.

Bridge Channel  
 BG\_\_\_\_ Hot Rolled  
 or  
 BGC\_\_\_\_ Cold Form  
 attach to Purlins  
 with (4)  $\frac{1}{2}$ " $\phi$  Bolts  
 (4)  $\frac{3}{4}$ " $\phi$  A325 Bolts

Typical 1" Inset Girt attachment, attach with (2)  $\frac{1}{2}$ " $\phi$  Bolts to Shop Welded Clip (See "Transverse Partition Framing Elevation" for locations)

Multi-Span Frame Column acting as 1" Inset Partition Column (See "Frame Cross Section" for locations and Part Marks)

Sheeting Clip  
 CL207 or PC29\_  
 (1) Fastener #12A  
 12-14 x 1" DP3  
 at each end

Partition Base Framing  
 Standard Base Angle RA1 shown, may vary. (See "Transverse Partition Framing Elevation" for requirement.)

Field Notch Partition Base Framing at Column

$\frac{1}{4}$ " $\phi$  Anchor (Min.)  
 60" o.c. (Max.)  
 Not by Bldg. Mfr.

Zee Girts shown, attachment similar for Cee or Zee Girt with outer flange toed up.