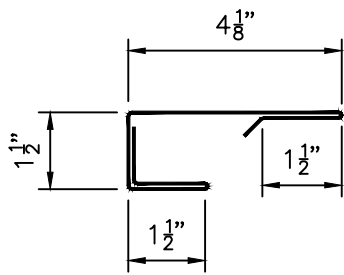
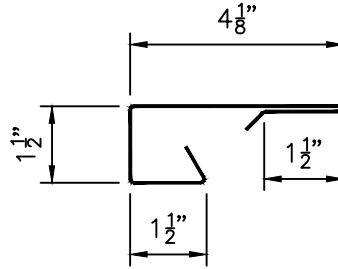


AVP / PBA Wall Panel - Four Sided Framed Opening

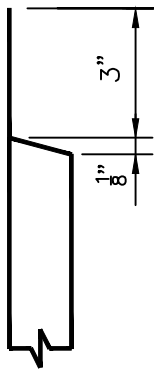
Jamb Trim Field Cut Details



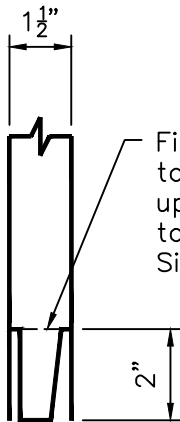
Alternate Jamb Trim F484
Top View



Jamb Trim F482
Top View

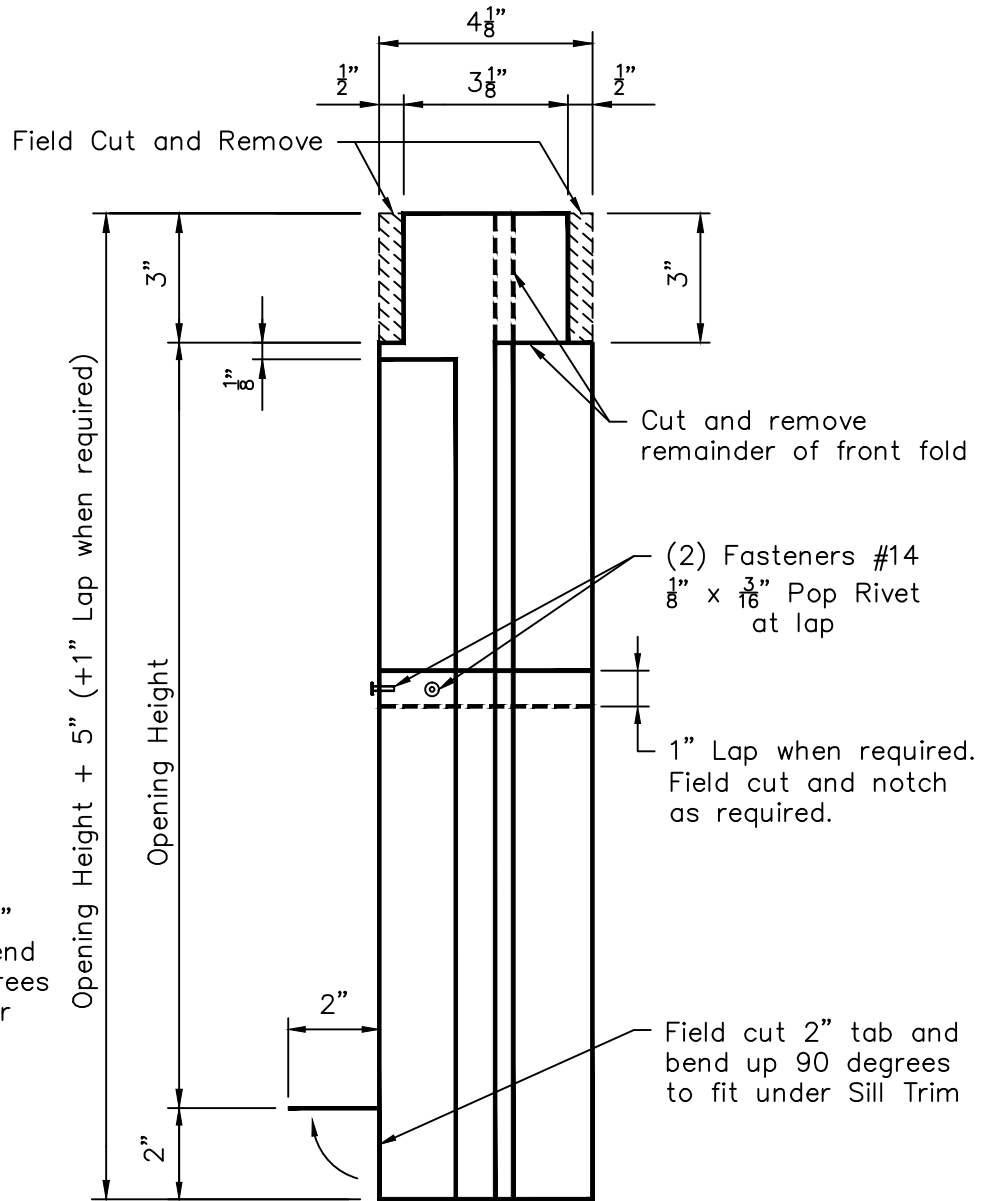


Side View at Head Trim



Side View at Sill Trim

Field cut 2" tab and bend up 90 degrees to fit under Sill Trim



Cut and remove remainder of front fold

(2) Fasteners #14
1/8" x 3/16" Pop Rivet
at lap

1" Lap when required.
Field cut and notch
as required.

Field cut 2" tab and
bend up 90 degrees
to fit under Sill Trim

Jamb Trim F482 and
Alternate Jamb Trim F484
Front View
Right Jamb Trim as shown
Left Jamb Trim opposite hand

Note: Field measure Opening Height before making field cuts and adjust cut dimensions accordingly so that Jamb Trim fits to Head and Sill Trim.