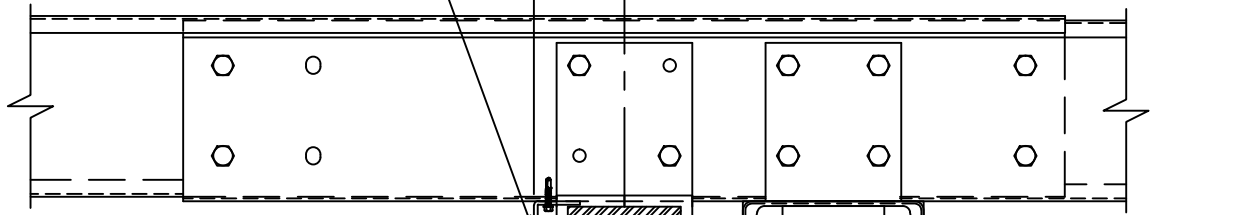


Flush Transverse Partition - Flush Column at Peak (Rafter Spliced) Type 4 Connection with Column Extension to Bridge Channel

Sheeting Angle RA1
Attach to each Purlin with
(1) Fastener #1B
 $\frac{1}{4}$ "-14 x $1\frac{1}{4}$ " DP3
(Field Notch at Shop Welded
Purlin Clips when Offset is 4")

Girt and Rafter
Offset 4" (w/8" Girts)
5" (w/10" Girts)
6" (w/12" Girts)



(4) $\frac{1}{2}$ " ϕ Bolts

Bridge Channel
BG____ Hot Rolled
or
BGC____ Cold Form
attach to Purlins
with (4) $\frac{1}{2}$ " ϕ Bolts

(2) $\frac{1}{2}$ " ϕ Bolts with
 $\frac{1}{2}$ " Washers WFH500
Slot side

Clip PC90_

Clip CL763
or PC92_
attach to Rafter
Splice Plate with
(2) $\frac{3}{4}$ " ϕ A325 Bolts

Typical Flush Girt attachment, attach
with (2) $\frac{1}{2}$ " ϕ Bolts to Shop Welded
Clip (See "Transverse Partition
Framing Elevation" for locations)

Flush Partition Column
(See "Transverse Partition
Framing Elevation" for locations and Flange
Brace requirements, if required)

Sheeting Clip
CL292 or PC30_
(1) Fastener #12A
12-14 x 1" DP3
at each end

Partition Base Framing
Standard Base Angle RA1 shown,
may vary. (See "Transverse Partition
Framing Elevation" for requirement.)

Field Cut Partition
Base Framing at
Column

$\frac{1}{4}$ " ϕ Anchor (Min.)
60" o.c. (Max.)
Not by Bldg. Mfr.

Zee Girts shown, attachment
similar for Cee or Zee Girt
with outer flange toed up.

