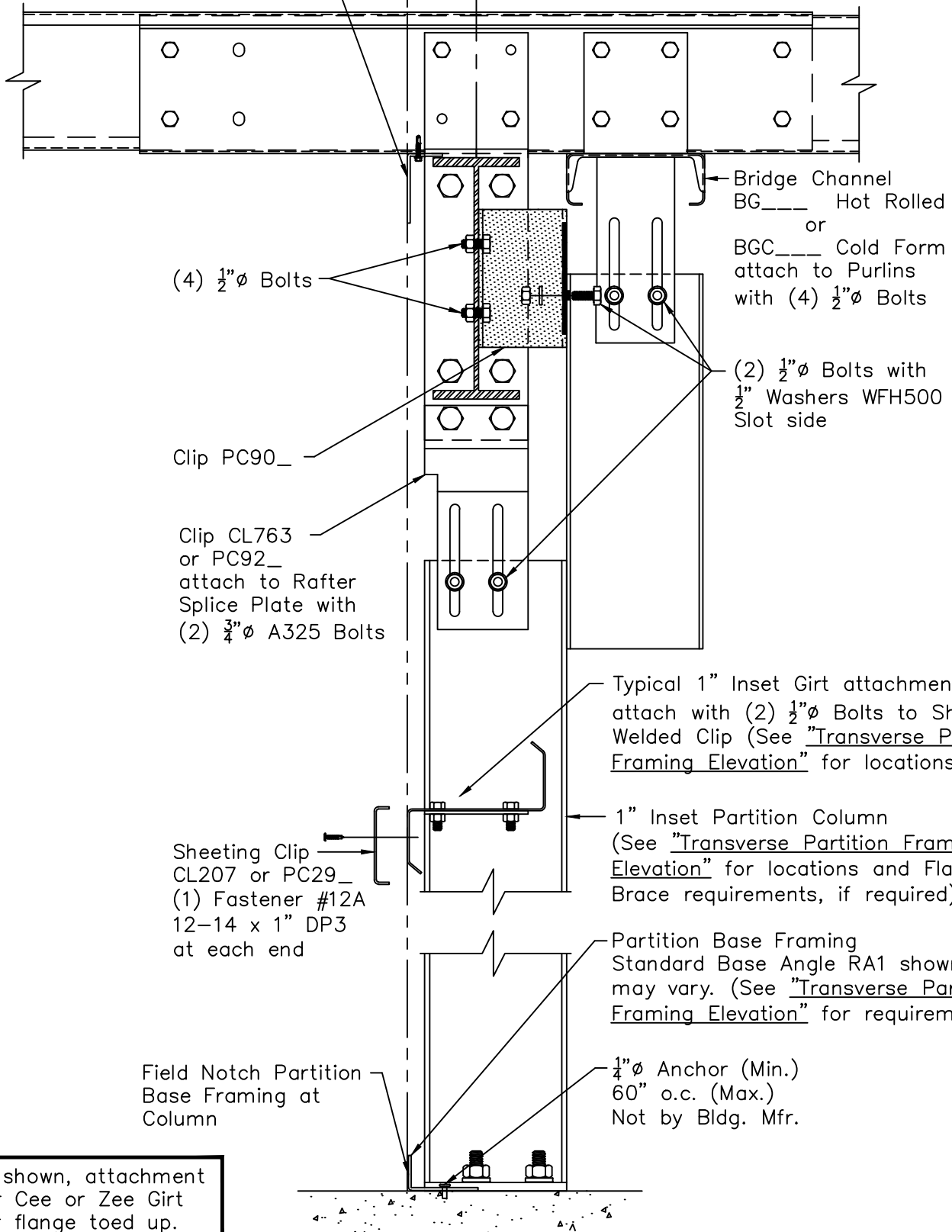


Flush Transverse Partition - 1" Inset Column at Peak (Rafter Spliced)

Type 4 Connection with Column Extension to Bridge Channel

Sheeting Angle RA1
 Attach to each Purlin with
 (1) Fastener #1B
 $\frac{1}{4}$ "-14 x $1\frac{1}{4}$ " DP3
 (Field Notch at Shop Welded
 Purlin Clips when Offset is 4")

Girt and Rafter
 Offset 4" (w/8" Girts)
 5" (w/10" Girts)
 6" (w/12" Girts)



Zee Girts shown, attachment similar for Cee or Zee Girt with outer flange toed up.