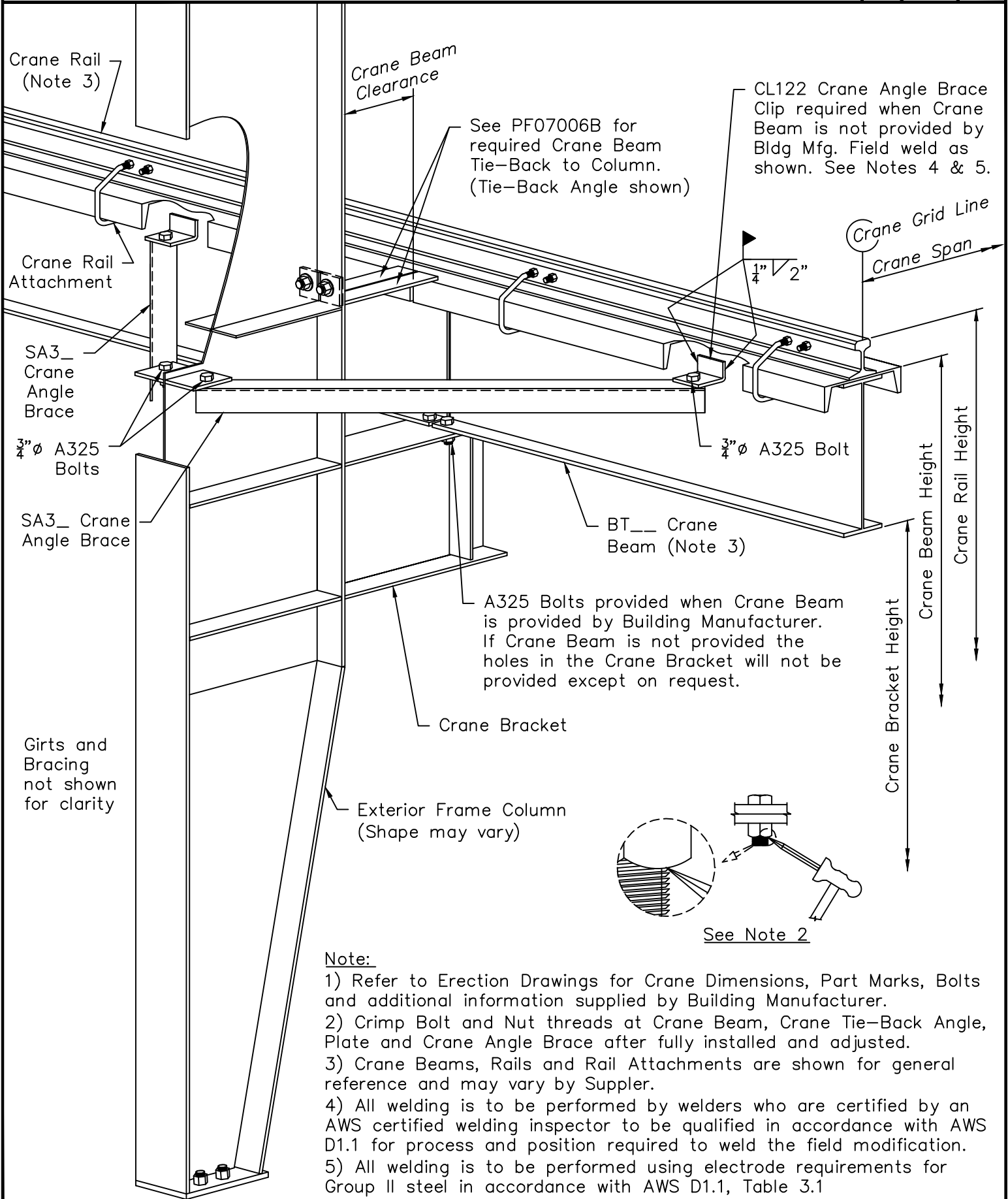


Top Running Crane on Crane Bracket At Exterior Frame Column



Note:

- 1) Refer to Erection Drawings for Crane Dimensions, Part Marks, Bolts and additional information supplied by Building Manufacturer.
- 2) Crimp Bolt and Nut threads at Crane Beam, Crane Tie-Back Angle, Plate and Crane Angle Brace after fully installed and adjusted.
- 3) Crane Beams, Rails and Rail Attachments are shown for general reference and may vary by Supplier.
- 4) All welding is to be performed by welders who are certified by an AWS certified welding inspector to be qualified in accordance with AWS D1.1 for process and position required to weld the field modification.
- 5) All welding is to be performed using electrode requirements for Group II steel in accordance with AWS D1.1, Table 3.1