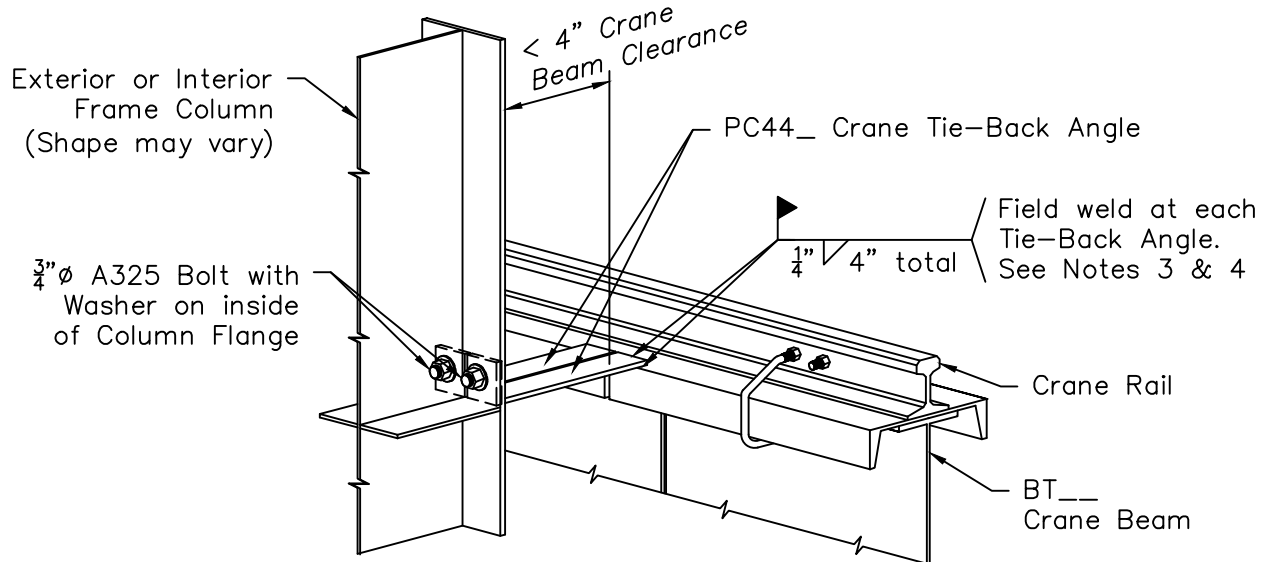
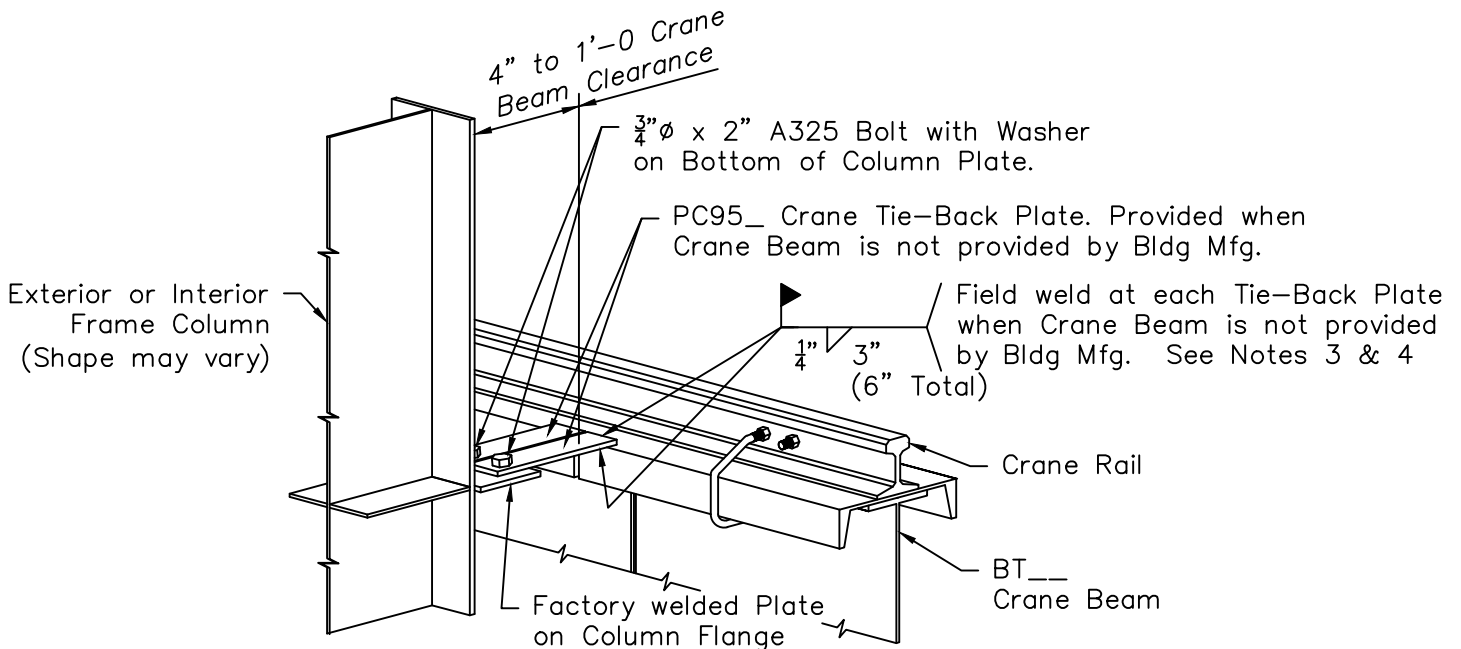


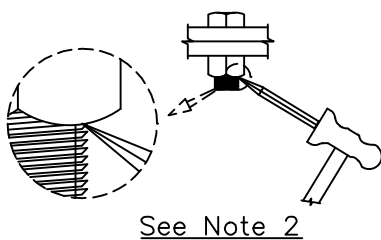
Top Running Crane Crane Tie-Back Angle and Plate Details



Crane Tie-Back Angle
When Crane Beam Clearance is less than 4"



Crane Tie-Back Plate
When Crane Beam Clearance is 4" to 1'-0"



See Note 2

Note:

- 1) Refer to Erection Drawings for Crane Dimensions, Part Marks, Bolts and additional information supplied by Building Manufacturer.
- 2) Crimp Bolt and Nut threads at Crane Beam, Crane Tie-Back Angle, Plate and Crane Angle Brace after fully installed and adjusted.
- 3) All welding is to be performed by welders who are certified by an AWS certified welding inspector to be qualified in accordance with AWS D1.1 for process and position required to weld the field modification.
- 4) All welding is to be performed using electrode requirements for Group II steel in accordance with AWS D1.1, Table 3.1