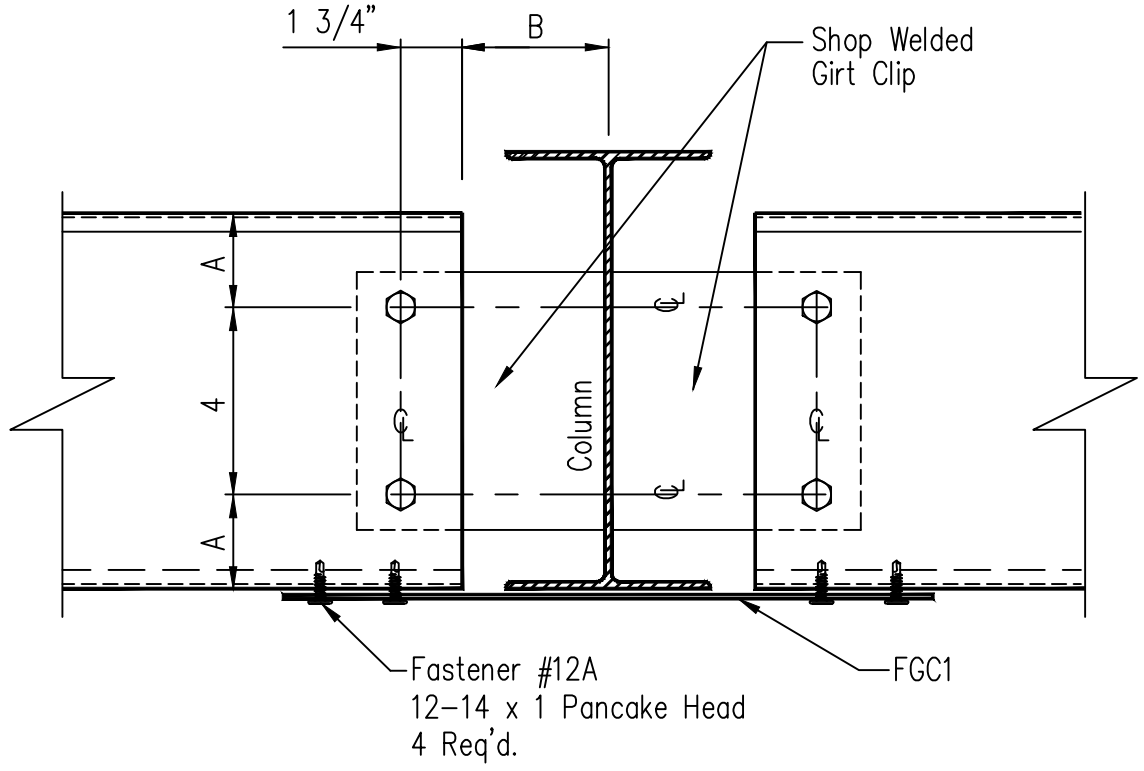


Sidewall or Endwall Interior Flush Girt Connection Detail

SHT. NO. **PF02020**
 DATE **Feb '11** REV. NO. **01**

Columns shown as hot rolled for demonstration only. They may be built up or cold form also.

Girt	A
8"	2"
10"	3"
12"	4"



Note: Use 1/2" Dia. x 1 1/4" A325 bolts as shown

Column Flange	B	2 Bolt Clip	4 Bolt Clip
Up to 7 7/8"	4 1/8"	SC-3	SC-16
8" to 9 7/8"	5 1/8"	SC-56	SC-72
10" to 11 7/8"	6 1/8"	SC-57	SC-73
12" +	7 1/8"	SC-272	SC-273